

CAMUS

Glass Lined Tanks STORAGE



Large Volume Bare Tanks / Large & Small Volume Jacketed Tanks

CAMUS HYDRONICS LTD.

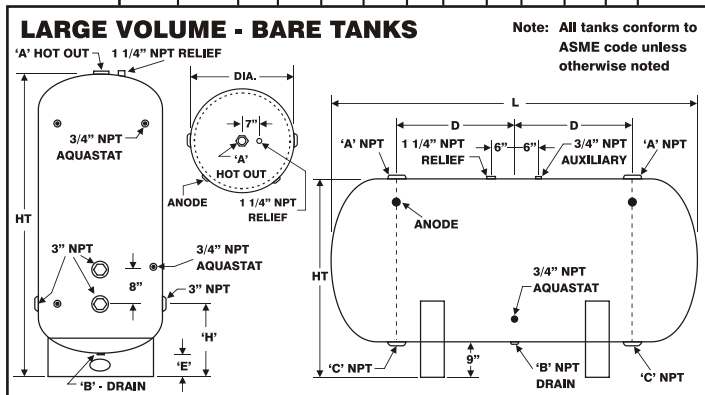
CAMUS HYDRONICS LTD. · 6226 Netherhart Rd., Mississauga, Ontario L5T 1B7 TEL: 905-696-7800 FAX: 905-696-8801

Glass Lined Bare Tanks



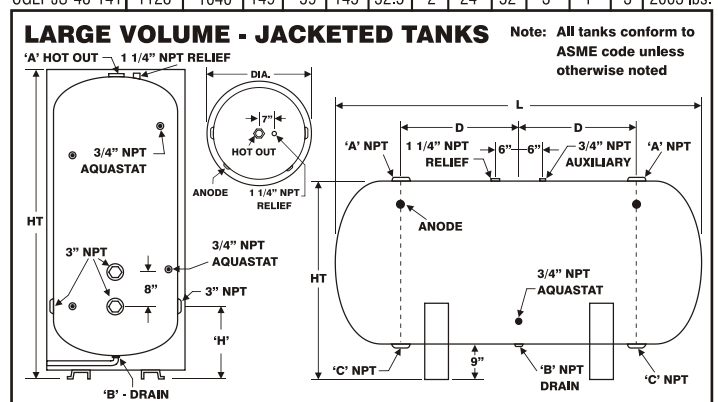
Glass Lined Jacketed Tanks

PART NO.	NOMINAL GAL. CAP.	ACTUAL GAL. CAP.	VERT. HT.	HORIZ. HT.	L	D	BASE CLR. E	H	DIA.	TAPPINGS			WEIGHT @125psi
										A	B	C	
CGLT-S-30-063	193	175	67"	39"	63"	18"	4"	17.5"	30"	2.5"	1"	3"	303 lbs.
CGLT-S-30-075	229	210	79"	39"	75"	24"	4"	17.5"	30"	2.5"	1"	3"	347 lbs.
CGLT-S-30-085	260	240	89"	39"	85"	29"	4"	17.5"	30"	2.5"	1"	3"	383 lbs.
CGLT-S-30-099	303	280	103"	39"	99"	36"	4"	17.5"	30"	2.5"	1"	3"	433 lbs.
CGLT-S-30-111	340	320	115"	39"	111"	42"	4"	17.5"	30"	2.5"	1"	3"	476 lbs.
CGLT-S-36-072	318	285	76"	45"	72"	21"	4"	19"	36"	2.5"	1"	3"	491 lbs.
CGLT-S-36-078	344	310	82"	45"	78"	24"	4"	19"	36"	2.5"	1"	3"	527 lbs.
CGLT-S-36-085	375	340	89"	45"	85"	27.5"	4"	19"	36"	2.5"	1"	3"	569 lbs.
CGLT-S-36-090	397	360	94"	45"	90"	30"	4"	19"	36"	2.5"	1"	3"	599 lbs.
CGLT-S-36-102	449	415	106"	45"	102"	36"	4"	19"	36"	2.5"	1"	3"	671 lbs.
CGLT-S-36-114	502	465	118"	45"	114"	42"	4"	19"	36"	2.5"	1"	3"	743 lbs.
CGLT-S-36-126	555	515	130"	45"	126"	48"	4"	19"	36"	2.5"	1"	3"	815 lbs.
CGLT-S-42-081	486	435	85"	51"	81"	24"	4"	20.5"	42"	3"	1"	3"	695 lbs.
CGLT-S-42-084	504	453	88"	51"	84"	25.5"	4"	20.5"	42"	3"	1"	3"	716 lbs.
CGLT-S-42-093	558	505	97"	51"	93"	30"	4"	20.5"	42"	3"	1"	3"	779 lbs.
CGLT-S-42-105	630	575	109"	51"	105"	36"	4"	20.5"	42"	3"	1"	3"	863 lbs.
CGLT-S-42-117	702	645	121"	51"	117"	42"	4"	20.5"	42"	3"	1"	3"	947 lbs.
CGLT-S-42-129	774	720	133"	51"	129"	48"	4"	20.5"	42"	3"	1"	3"	1031 lbs.
CGLT-S-42-139	846	790	143"	51"	139"	53"	4"	20.5"	42"	3"	1"	3"	1101 lbs.
CGLT-S-48-073	572	500	77"	57"	73"	18.5"	4"	22"	48"	3"	1"	3"	928 lbs.
CGLT-S-48-084	658	580	88"	57"	84"	24"	4"	22"	48"	3"	1"	3"	1045 lbs.
CGLT-S-48-096	752	675	100"	57"	96"	30"	4"	22"	48"	3"	1"	3"	1173 lbs.
CGLT-S-48-108	846	765	112"	57"	108"	36"	4"	22"	48"	3"	1"	3"	1301 lbs.
CGLT-S-48-120	940	840	124"	57"	120"	42"	4"	22"	48"	3"	1"	3"	1428 lbs.
CGLT-S-48-141	1128	1040	145"	57"	141"	52.5"	4"	22"	48"	3"	1"	3"	1652 lbs.
CGLT-S-54-099	981	875	105"	63"	99"	37.5"	6"	25.5"	54"	3"	1.5"	3"	1596 lbs.
CGLT-S-54-123	1219	1110	129"	63"	123"	49.5"	6"	25.5"	54"	3"	1.5"	3"	1889 lbs.
CGLT-S-54-147	1457	1340	153"	63"	147"	61.5"	6"	25.5"	54"	3"	1.5"	3"	2182 lbs.
CGLT-S-54-183	1814	1690	189"	63"	183"	79.5"	6"	25.5"	54"	3"	1.5"	3"	2622 lbs.
CGLT-S-60-114	1395	1245	120"	69"	114"	45"	6"	27"	60"	3"	1.5"	3"	2299 lbs.
CGLT-S-60-138	1689	1530	144"	69"	138"	57"	6"	27"	60"	3"	1.5"	3"	2704 lbs.
CGLT-S-60-168	1983	1820	168"	69"	168"	69"	6"	27"	60"	3"	1.5"	3"	3110 lbs.
CGLT-S-60-186	2276	2105	192"	69"	186"	81"	6"	27"	60"	3"	1.5"	3"	3516 lbs.
CGLT-S-60-210	2570	2395	216"	69"	210"	93"	6"	27"	60"	3"	1.5"	3"	3922 lbs.
CGLT-S-72-120	2115	1865	126"	81"	120"	48"	6"	30"	72"	3"	1.5"	3"	2876 lbs.
CGLT-S-72-144	2538	2285	150"	81"	144"	60"	6"	30"	72"	3"	1.5"	3"	3363 lbs.
CGLT-S-72-168	2961	2700	174"	81"	168"	72"	6"	30"	72"	3"	1.5"	3"	3851 lbs.
CGLT-S-72-192	3384	3115	198"	81"	192"	84"	6"	30"	72"	3"	1.5"	3"	4338 lbs.
CGLT-S-72-216	3807	3530	222"	81"	216"	94.5"	6"	30"	72"	3"	1.5"	3"	4825 lbs.
CGLT-S-72-250	4406	4120	256"	81"	250"	113"	6"	30"	72"	3"	1.5"	3"	5516 lbs.
CGLT-S-84-138	3310	2915	144"	93"	138"	57"	6"	33"	84"	3"	1.5"	3"	4647 lbs.
CGLT-S-84-160	3886	3480	168"	93"	162"	69"	6"	33"	84"	3"	1.5"	3"	5328 lbs.
CGLT-S-84-186	4462	4045	192"	93"	186"	81"	6"	33"	84"	3"	1.5"	3"	6009 lbs.
CGLT-S-84-210	5038	4610	216"	93"	210"	93"	6"	33"	84"	3"	1.5"	3"	6689 lbs.
CGLT-S-84-256	6141	5695	262"	93"	256"	116"	6"	33"	84"	3"	1.5"	3"	7994 lbs.



LARGE VOLUME JACKETED TANKS

PART NO.	NOMINAL GAL. CAP.	ACTUAL GAL. CAP.	VERT. HT.	HORIZ. HT.	L	D	BASE CLR. E	H	DIA.	TAPPINGS			WEIGHT @125psi
										A	B	C	
CGLT-JS-30-063	193	175	71"	41"	67"	18"	2"	19.5"	34"	2.5"	1"	3"	438 lbs.
CGLT-JS-30-075	229	210	83"	41"	79"	24"	2"	19.5"	34"	2.5"	1"	3"	493 lbs.
CGLT-JS-30-085	260	240	93"	41"	89"	29"	2"	19.5"	34"	2.5"	1"	3"	539 lbs.
CGLT-JS-30-099	303	280	107"	41"	103"	36"	2"	19.5"	34"	2.5"	1"	3"	603 lbs.
CGLT-JS-30-111	340	320	119"	41"	115"	42"	2"	19.5"	34"	2.5"	1"	3"	658 lbs.
CGLT-JS-36-072	318	285	80"	47"	76"	21"	2"	21"	40"	2.5"	1"	3"	667 lbs.
CGLT-JS-36-078	344	310	86"	47"	82"	24"	2"	21"	40"	2.5"	1"	3"	710 lbs.
CGLT-JS-36-085	375	340	93"	47"	89"	27.5"	2"	21"	40"	2.5"	1"	3"	760 lbs.
CGLT-JS-36-090	397	360	98"	47"	94"	30"	2"	21"	40"	2.5"	1"	3"	796 lbs.
CGLT-JS-36-102	449	415	110"	47"	106"	36"	2"	21"	40"	2.5"	1"	3"	881 lbs.
CGLT-JS-36-114	502	465	122"	47"	118"	42"	2"	21"	40"	2.5"	1"	3"	967 lbs.
CGLT-JS-36-126	555	515	134"	47"	130"	48"	2"	21"	40"	2.5"	1"	3"	1053 lbs.
CGLT-JS-42-081	486	435	89"	53"	85"	24"	2"	22.5"	46"	3"	1"	3"	917 lbs.
CGLT-JS-42-084	504	453	92"	53"	88"	25.5"	2"	22.5"	46"	3"	1"	3"	942 lbs.
CGLT-JS-42-093	558	505	101"	53"	97"	30"	2"	22.5"	46"	3"	1"	3"	1017 lbs.
CGLT-JS-42-105	630	575	113"	53"	109"	36"	2"	22.5"	46"	3"	1"	3"	1117 lbs.
CGLT-JS-42-117	702	645	125"	53"	121"	42"	2"	22.5"	46"	3"	1"	3"	1217 lbs.
CGLT-JS-42-129	774	720	137"	53"	133"	48"	2"	22.5"	46"	3"	1"	3"	1317 lbs.
CGLT-JS-42-139	846	790	147"	53"	143"	53"	2"	22.5"	46"	3"	1"	3"	1400 lbs.
CGLT-JS-48-073	572	500	81"	59"	77"	18.5"	2"	24"	52"	3"	1"	3"	1176 lbs.
CGLT-JS-48-084	658	580	92"	59"	88"	24"	2"	24"	52"	3"	1"	3"	1310 lbs.
CGLT-JS-48-096	752	675	104"	59"	100"	30"	2"	24"	52"	3"	1"	3"	1456 lbs.
CGLT-JS-48-108	846	765	116"	59"	112"	36"	2"	24"	52"	3"	1"	3"	1602 lbs.
CGLT-JS-48-120	940	840	128"	59"	124"	42"	2"	24"	52"	3"	1"	3"	1748 lbs.
CGLT-JS-48-141	1128	1040	149"	59"	145"	52.5"	2"	24"	52"	3"	1"	3"	2003 lbs.



SMALL VOLUME JACKETED TANKS

PART NO.	RATED CAPACITY (gallons)	A DIAM. (inches)	B HT. (inches)	C T&P HT. (inches)	D TOP H.W. CONN. (inches)	E AQUAS & TOP CIRC. CONN. (inches)	F BOT. CIRC. CONN. (inches)	G DRAIN HT. (inches)	H CLEAN OUT HT. (inches)	WEIGHT @125 psi (lbs.)
CGLT-J-24-80	80 G	24"	58.75"	52.5"	59.75"	14.25"	9.25"	4.75"	7.25"	192 lbs.
CGLT-J-24-80A*	80 G	24"	58.75"	52.5"	59.75"	14.25"	9.25"	4.75"	7.25"	192 lbs.
CGLT-J-28-120	119 G	28"	62.5"	55.75"	63.5"	14.5"	9.5"	5"	7.5"	366 lbs.
CGLT-J-28-120A*	119 G	28"	62.5"	55.75"	63.5"	14.5"	9.5"	5"	7.5"	366 lbs.
CGLT-J-32-200	200 G	32"	77"	66"	78"	16.25"	11.25"	6.75"	9.25"	541 lbs.

* Note: The "A" in these part numbers classifies these tanks as conforming to ASME code. Tanks with 200 Gal. capacity or more (Bare Tanks and Jacketed Tanks) all conform to ASME code.

